

Ultrasonic Flaw Detector Uee981 Series



~220V



USB



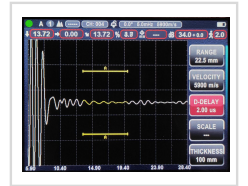
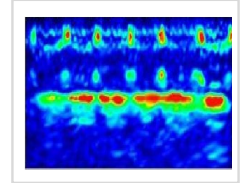
Software



LCD



Limit



Functions & Features

- IP65, portable and ultra-thin design
- Meet the requirements of EN12668-1
- Square wave pulser, PRF up to 3 kHz for fast scanning / detecting
- High-speed sampling for clear and stable echo diagram with all details
- High numbers of digital filters, suitable for nearly any application
- Anti-noise design, high signal-to-noise ratio, perfect for tough working conditions
- With standard DAC/TCG/DGS/AVG function, Color B-Scan
- Built-in standards, AWS D1.1/D1.5. tools, flaw detection video recording
- Reports can be automatically formed and viewed on the equipment
- PC connection / Blue tooth connection to mobile for data management and reports printing on-site
- Storage: 1000 groups of data (expandable); External USB for directly storage (unlimited memory)
- Battery life ≥ 10 hours, with fast independent charging control
- Language: English (expandable: German / Turkish / Korean / Spanish and etc)

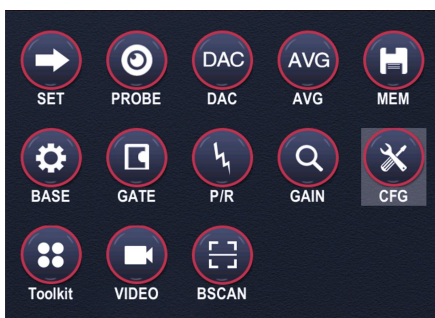
Application

Quickly and accurately detection, positioning, evaluation and diagnosis of various flaws in the work-piece, such as welding cracks, defects and etc. It Widely used in Steel Structure Industry, electric power, petrochemical, boiler and pressure vessel, railway transportation, automobiles, machinery, and other fields.

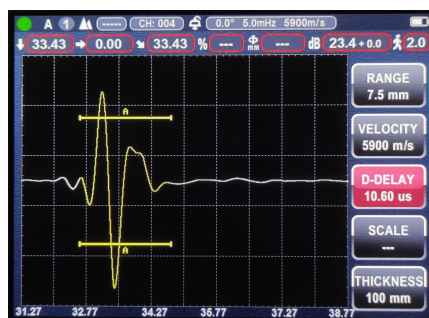
Technical Parameters

Model	Uee981S ^{mart}	Uee981O ^{ptimum}	Uee981E ^{xpert}
Scan Range(mm)	0~10000mm	0~12000mm	0~15000mm
Velocity Range (m/s)	1000~15000	500~18000	100~20000
Gain Range(dB)	110dB	120dB	120dB
Operating Frequency	0.2~20MHz	0.2~25MHz	0.2~35MHz
Pulse Repetition Frequency	10~1500Hz	10~2500Hz	10~3000Hz
Vertical linearity error	≤2.5%	≤2.5%	≤2.5%
Horizontal linearity error	≤0.2%	≤0.2%	≤0.2%
Sampling Frequency	150Mhz	200Mhz	320Mhz
Transducer Frequency Max.	15MHz	20MHz	30MHz
Dynamic Range	≥38dB	≥38dB	≥38dB
Resolution	≥40dB	≥40dB	≥40dB
Testing sensitivity	≥65dB	≥65dB	≥65dB
Pulse amplitude	100V~500V	100V~500V	100V~500V
Pulse Width	0.03~0.51μs	0.03~0.51μs	0.03~0.51μs
Transducer Damping	50Ω~400Ω	50Ω~400Ω	50Ω~400Ω
Interface for Probe cable	BNC (Optional LEMO)	BNC (Optional LEMO)	BNC (Optional LEMO)
Working mode	7 modes: Straight / Angle / Dual crystal probe, Penetrating detection and etc.		
Power Supply	100-240V 50-60Hz; DC 9V Rechargeable Li-ion battery, 10+ hours life		
Dimension & Weight	Dimension 240×153×38mm; Net weight 0.98kg (with Li-ion battery)		
Environment	Temperature -10~50℃, Humidity 20~ 95%RH		

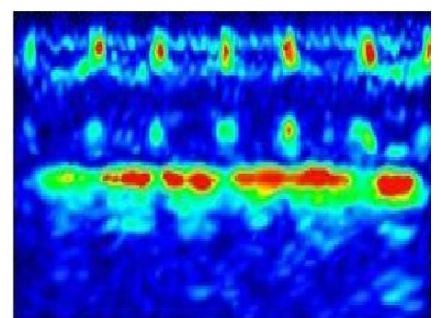
Pictures



Menu



Main Interface



Color B scan



AVG interface

DAC interface

Automatic Reports

Configuration

Function	Uee981S ^{mart}	Uee981O ^{ptimum}	Uee981E ^{xpert}
Square wave pulser	●	●	●
DAC/ DGS / AVG diagram	●	●	●
TCG	○	●	●
Color B-Scan	○	●	●
AWS	○	○	●
Automatic Calibration (V2)	●	●	●
PC Connection	●	●	●
Bluetooth Connection	○	●	●
External Storage (USB)	●	●	●
Detection Video	○	●	●

Standard delivery

Name	Quantity	Name	Quantity
Main unit	1	Carry Strap	1
Probe and Cable	2	Power Adapter & Battery	1
PC software	1	Manual	1
Mobile App (Uee981O/ 981E only)	1	Certificate & Documents	1
IIW V2 Block (Uee981E only)	1	ABS Instrument Box	1



Ultra-thin and portable design



Automatic report display



Standard Delivery