

The Eco-Friendly Solution for Professional Labeling,
Bar Code, and Heat Shrink Tube Identification

GREEN MACHINE®

GREENMACHINE®

PEELGUARD®
Tape Trimmer Rounds
Label Corners on Demand
for Durable and Professional
Looking Labels

Telecom/Electrical
Hot Keys for Instant
Access to Templates
for Patch Panel, Wire
Wrap, and Flag Labels

Front Cartridge Loading
System. Window for Easy
Color, Part Number and
Usage Identification

Text Size and Font Style
Hot Keys for Fast and
Easy Selection of
Type Sizes and Styles

Automatic or
Manual Cut Off

Backlit LCD Display for
Optimum Viewing in
All Light Conditions

QWERTY Keyboard for
Faster, Easier, and
More Accurate Text Entry

Built-in Handle for
Portability, Tool Belt or
Storage Hook Attachment

Euro/Latin Hot Key Gives
Instant Access to 204
European and Latin
Characters



www.ksun.com

K-SUN

3-Year
WARRANTY

The K-Sun GREEN MACHINE® Offers Eco-Friendly Functions That Make Custom Labeling Easier, Better and More Economical!

Exclusive GREEN MACHINE® Features Deliver Real Benefits.

QUICK KEYS

Quick Access Keys Save Time, Make Label Creation Easier



Text Size Quick Key

Sets type sizes matched to tape width. Eliminates menu prompts. Makes label creation fast and easy.

Font Quick Key

Selects from 14 font styles at the touch of a key for instant label design formats.



Patch Panel, Wrap, Flag Hot Keys

Provides direct access to special function keys for electrical, panel, wire and cable identification.

Templates make label creation easier.

FRONT CARTRIDGE LOADING

Front Cartridge Loading Makes Changing Tapes Convenient



Changing the tape supply is quick and easy.

Easily view color-coded and remaining tape indicators through cover window.

BRIGHT BACKLIT DISPLAY

Backlit LCD Display Lets You Easily Preview Your Work



Four lines, 11 intensity settings let you see in any light condition.

The K-Sun GREEN MACHINE® Offers Eco-Friendly Functions That Make Custom Labeling Easier, Better and More Economical!

Exclusive GREEN MACHINE® Features Deliver Real Benefits.

MARGIN SETTINGS

6 Margin Settings Improve Label Balance and Reduce Tape Waste



Use Tape More Efficiently

Users now have many options to set margin length – either before or after printed text – for proper label visual balance. Multiple setting options can reduce margins down to 1mm between front and back edges and label text, using less tape and saving money.

QWERTY KEYBOARD

Keyboard Design Gives You More Options, Precision and Speed



QWERTY Keyboard Lets You Find Characters Where You Expect Them. Standard style keyboard with bigger keys offers easier text entry and fewer key stroke mistakes when designing custom labels.



Texting Method Lets You Work on the Go Ergonomic printer design with QWERTY keyboard allows for texting method, creating labels faster and easier for users accustomed to operating mobile devices.



Desktop Operation Lets You Work at Your Desk QWERTY keyboard gives users flexibility to make labels on a desk or workbench.

LANGUAGES

Euro/Latin Hot Key Provides Quick Language Changes



Instant access to special European and Latin characters for multiple language labels fast and easy.

VIDEO

GREEN MACHINE® Product Video



Scan to see an exciting demonstration of GREEN MACHINE® features and benefits.

The K-Sun GREEN MACHINE® Offers Eco-Friendly Functions That Make Custom Labeling Easier, Better and More Economical!

Exclusive GREEN MACHINE® Features Deliver Real Benefits.

PEELGUARD®

PeelGuard® Label Edge Trimmer Reduces Do-Overs Because of Labels Curling



PeelGuard® Label Edge Trimmer
Exclusive electronic edge trimmer rounds label corners to protect labels and make them more durable.



Label Corner Curl Is A Big Problem!
Square corners catch and curl when cleaned, rubbed or picked—destroying labels and costing time and money to replace. Exclusive PeelGuard® tape cutter rounds corners for more permanent and better looking labels.

BARCODES

8 Bar Code Formats: EAN-8, EAN-13, CODE 128, CODE 39, ITF, CODABAR, UPC-A, UPC-E



Create custom bar codes on demand for asset tracking, product identification, pricing, inventory control and more.

FUNCTIONAL DESIGNS

Space Saver Design Reduces Storage Footprint



Printers can store and operate on end to save desktop space.

Adapter Cord Restraint Protects Printer Operation



Protects plug in printer port so it stays in unit.

The Eco-Friendly Solution for Making Custom Labels on Demand for Industrial, Electrical, Safety, Lab, Medical, Environmental, Educational, Office, Business, Home and More.



Police and Fire



Homeland Security



Warehouse and Storage



Files and Records



Bar Code Labels



Cable ID Flag Labels



Laboratory and Medical Identification



Electrical Panels



Custom Calibration Labels



Heat Shrink Tube ID
Prints on 5 Heat Shrink Tube Sizes in 6 Color Combinations. Prints on 6 Labeling Tape Sizes 1/6" (4mm), 1/4" (6mm), 3/8" (9mm), 1/2" (12mm), 3/4" (18mm) and 1" (24mm). Prints on one Self-Laminating Wire Wrap Tape.



Industrial Safety and Information



Wire and Cable Identification



TV and Cable



New For K-Sun GREEN MACHINE®

MaxiLabel® Pro Ver 4.0 software gives the K-Sun GREEN MACHINE® 2020LSTB-PC printer full PC compatibility with Windows® 7, Vista, XP operating systems. (FREE Windows® 8 upgrade when available).



- Import logos, graphics and symbols into custom label designs fast and easy
- Import Excel or Word .csv, .txt, .xls, .xlsx files into the software to save time entering text or data.
- Adjust margins settings down to 1mm to reduce tape waste
- 15 Bar Code formats including new 2-dimensional QR and DataMatrix codes along with EAN8, EAN13, Code39, Code128, UPC-A, UPC-E, NW-7, ITF, EAN128, GSI DataBar, Micro QR Code, MaxiCode, PDF417
- Friendly interface includes 158 pre-set wizards to help with label design along with 8 table formats and 86 unique border designs.
- Print horizontal, vertical, mirror image, and even multiple color labels with the print-paste function.
- Includes 839 custom symbols in industrial categories including ANSI, IMO, Facility, Safety, Electrical, Safety Headers and Personal Protection.
- Euro/Latin character function makes multiple language labels easy to design and print.
- Special background patterns facilitate designs for security labels.

← Make Data Matrix or QR Codes in seconds with your Green Machine.



The First "Green" Electronic Label Printer

Printer and AC Adapter are compliant with CE Eco-Design Directives including ErP Lot.6, Low Voltage Directive, EMC Directive and EU RoHS Directive as well as WEEE and Level V certification. The adapter meets tests, certification and requirements for UK, EU, UL, cUL, LPS, TUV, GS, and California Energy Reduction Standards. There are no hazardous parts or materials as well as non-PVC and lead-free parts. Recycled paper and recycled plastics are used where possible. A cartridge recycle program is available in the U.S.

Add symbols to your labels for easier & better visual communication.

K-Sun GREEN MACHINE® contains more than 1,115 special European, Latin American and Greek letters including hundreds of abbreviations, arrows, parenthetical marks, number combinations and unit identification symbols. The software also contains hundreds of special symbols for Safety, Electrical, Environment, Public Signs, Construction, Medical and Hospital, Food, Special Occasions, General Living and Seasons. Symbols placed on adhesive labels are important for clear communication especially for multi-cultural individuals in the workforce. Better labels improve safety and organization.

Sample of GREEN MACHINE® Symbols



Power and Accessories



Universal International AC Adapter

The GMAD2020 (100-240V) switching power adapter included with the GREEN MACHINE® meets and exceeds EU, UK, cUL, UL, CE and Level V California energy reduction standards and is available in multiple plug configurations for U.S. and international electrical requirements.



Optional High-Impact Carrying and Storage Case



Rechargeable Battery Power Pack

Sanyo® Eneloop Battery Power Pack for use with the GREEN MACHINE®



K-Sun GREEN MACHINE® is warranted for parts, labor, repair and replacement for up to 3 years from date of customer purchase.

3-Year WARRANTY

Stand-Alone Portable



2020LSTB Includes printer, AC adapter, 212BW tape, manual, quick start guide, tape cutter tool, (6) AA batteries.

Basic PC



2020LSTB-PC Includes printer, AC adapter, 224BW tape, manual, quick start guide, tape cutter tool, (6) AA batteries, MaxiLabel® Pro Ver 4.0 software with quick start guide, software manual on CD, USB cable.

Deluxe PC



2020LSTB-PCD Includes printer, AC adapter, three tapes (224BW, 224SL and 205STBW), manual, quick start guide, tape cutter tool, (6) AA batteries, MaxiLabel® Pro Ver 4.0 software with quick start guide, software manual on CD, USB cable, green industrial hard plastic case.

K-Sun GREEN MACHINE® Offers 115 Different Labeling Tapes and Heat Shrink Tube Supplies

COATED FOR DURABILITY AND FLEXIBILITY

1/6" 4mm	BLACK on white
	#204BW

1/4" 6mm	BLACK on clear	BLACK on white	BLACK on yellow	WHITE on black	BLACK on green	BLACK on blue	BLACK on red
	#206BC	#206BW	#206BY	#206WB	#206BG	#206BB	#206BR

3/8" 9mm	BLACK on clear	BLACK on white	BLACK on yellow	WHITE on black	BLACK on green	BLACK on blue	BLACK on red	BLACK on silver matte 16"
	#209BC	#209BW	#209BY	#209WB	#209BG	#209BB	#209BR	#209SM

1/2" 12mm	BLACK on clear	BLACK on white	BLACK on yellow	WHITE on black	BLACK on green	BLACK on blue	BLACK on red	BLACK on silver matte 16"	BLACK on orange	WHITE on clear	WHITE on vivid red	WHITE on vivid green	WHITE on vivid blue	GOLD on clear	GOLD on black	BLACK on white removable adhesive	WHITE on brown 24'
	#212BC	#212BW	#212BY	#212WB	#212BG	#212BB	#212BR	#212SM	#212BO	#212WC	#212WR	#212WG	#212WL	#212GC	#212GB	#212RA	#212WBR

3/4" 18mm	BLACK on clear	BLACK on white	BLACK on yellow	WHITE on black	BLACK on green	BLACK on blue	BLACK on red	BLACK on silver matte 16"	BLACK on orange	WHITE on clear	WHITE on vivid red	WHITE on vivid green	WHITE on vivid blue	WHITE on vivid orange	Black on violet	RED on white	BLUE on white
	#218BC	#218BW	#218BY	#218WB	#218BG	#218BB	#218BR	#218SM	#218BO	#218WC	#218WR	#218WG	#218WL	#218WO	#218BV	#218RW	#218BLW

3/4" 18mm cont.	RED on clear	WHITE on clear	BLACK on gray	BLACK on translucent matte	BLACK on fluorescent red 16' (5M)	BLACK on fluorescent pink 16' (5M)	BLACK on fluorescent orange 16' (5M)	BLACK on fluorescent yellow 16' (5M)	BLACK on fluorescent green 16' (5M)	BLACK on oak wood grain 13' 10"	WHITE on rosewood grain 13' 10"	BLACK on valence marble 13' 10"	WHITE on granite stone 13' 10"	WHITE on sunset 13' 10"	BLACK on holographic 13' 10"
	#218RC	#218WC	#218BX	#218BTM	#218FR	#218FP	#218FO	#218FY	#218FG	#218WPO	#218WPR	#218SPV	#218SPG	#218CGS	#218HLF

1" 24mm	BLACK on clear	BLACK on white	BLACK on yellow	WHITE on black	BLACK on green	BLACK on blue	BLACK on red	BLACK on silver matte 16"	BLACK on orange	WHITE on clear	WHITE on vivid red	WHITE on vivid green	WHITE on vivid blue	WHITE on vivid orange	BLACK on white super strong adhesive	BLACK on yellow super strong adhesive	WHITE on brown 24'
	#224BC	#224BW	#224BY	#224WB	#224BG	#224BB	#224BR	#224SM	#224BO	#224WC	#224WR	#224WG	#224WL	#224WO	#224IBW	#224IBY	#224WBR

Specialty Tapes



Self-Lamination Overwrap Label Tape

224SL	1/4" Black on white
	3/4" Clear Tail (26')

Wire wrap tape prints on white area and has clear tail to overlap printed material



Fabric Tape Iron On 16"

	Black on blue	Black on pink
3/8"	209FBB	209FBP
1/2"	212FBB	212FBP



Glow in the Dark

212LMY	1/2" Black on glow in the dark 59"
218LMY	3/4" Black on glow in the dark 59"
224LMY	1" Black on glow in the dark 59"



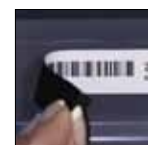
Flag Format Perforated Fold in Half

224TBW	1" Black on white
--------	--------------------------



Reflective Tapes

224RFW	1" Black on Reflective white
224RFY	1" Black on Reflective yellow



Magnet Tape 13'

	Black on white	Black on yellow
3/8"	209MTBW	209MTBY
1/2"	212MTBW	212MTBY
3/4"	218MTBW	218MTBY
1"	224MTBW	224MTBY



- Labeling tapes and wire wrap made of durable, all-weather polyester base with a permanent, industrial-grade acrylic adhesive
- Tapes are flexible for curved surface labeling
- Adhesive can adhere to itself for wire tabbing and flagging
- 10 year outdoor life
- Labeling tapes, shrink tube material and wire wrap prints with resin thermal transfer ribbon for UV, scratch, fade, chemical and smear resistance

- Shrink tube material is an industrial grade polyolefin base material
- Shrink rate is 50% or more in diameter and 15% or less in length with shrink ratio of 3 to 1
- Shrink tube material compliance, UL standard 224, Meets mil-1-23053/5 class 1 and 3, mil-IR 46846 type V ratings
- Tape complies with ANSI/TIA/EIA-606 Standards



Scan the QR Code to Discover All the Tape Supply Choices

K-SUN